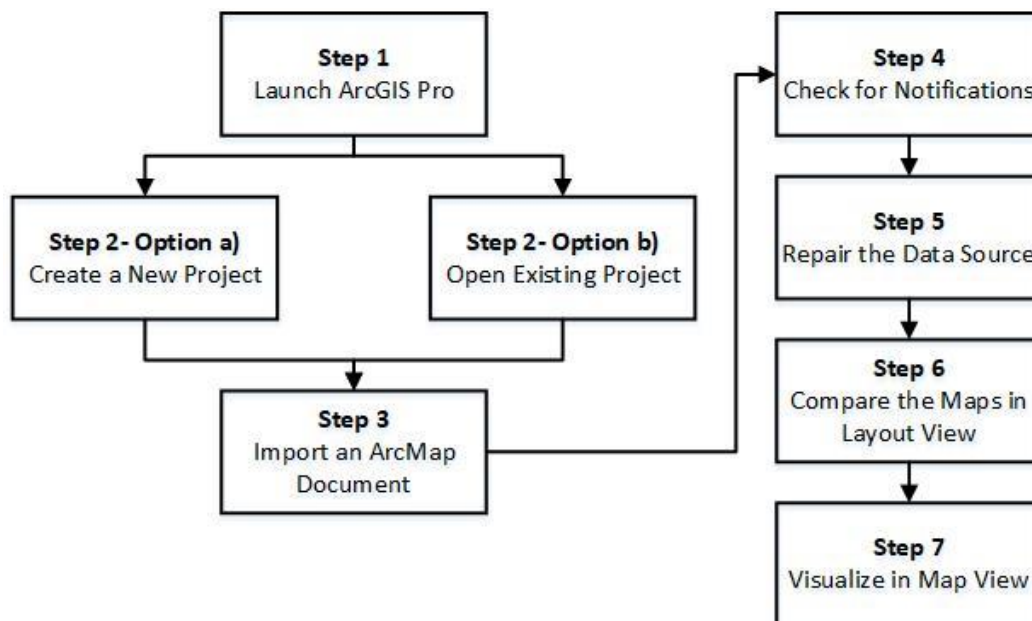


**LIBRARY**

IMPORT ARCMAP DOCUMENTS INTO ARCGIS PRO PROJECTS

In ArcGIS Pro, project files (.aprx) replace ArcMap map documents (.mxd). Projects are a collection of databases, folders, maps, styles, toolboxes and layouts that keep work organized in one file. ArcGIS Pro can open ArcMap documents as far back as ArcMap 8.0. This guide teaches users how to import and convert existing ArcMap map documents into ArcGIS Pro projects using the workflow below.



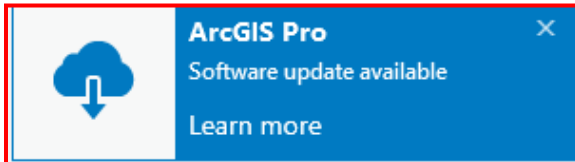
Note: ArcGIS Pro requires you to sign in with your Trent ArcGIS Global account. This is the same account used to enroll in online Esri training courses. If you would like an account, please contact MaDGIC (madgichelp@trentu.ca) to request one.

To learn more about the essentials of ArcGIS Pro, that goes beyond the scope of this guide, we recommend reading these articles and taking the Esri training courses:

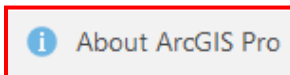
- [Migrating to ArcGIS Pro for ArcMap Users](#)
- [Visual Differences in ArcGIS Pro](#)
- [Terminology Differences Between ArcGIS Pro and ArcMap](#)
- [Supported Data Types and Items](#)
- [Esri Training: Getting Started with ArcGIS Pro](#)
- [Esri Training: Streamline GIS Workflows with ArcGIS Pro](#)
- [Esri Training: Going Pro: ArcGIS Pro Essentials for ArcMap Users](#)

Step 1 Launch ArcGIS Pro

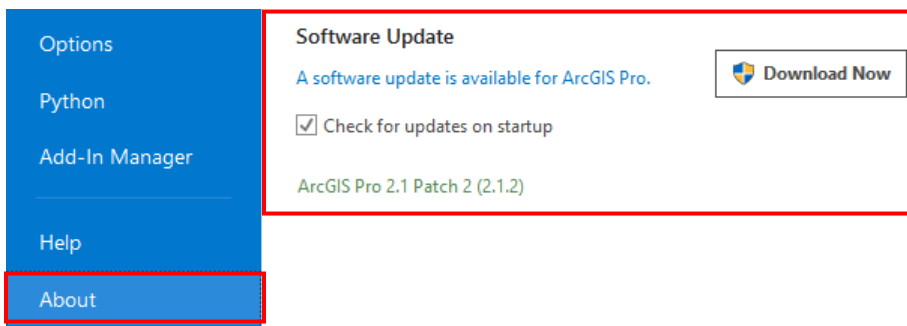
Note: By default, there may be a notification for a software update that appears in the top right corner of the screen. Click on **Learn More**.



Software updates are also accessible by clicking on **About ArcGIS Pro** in the bottom left corner of the launch screen.

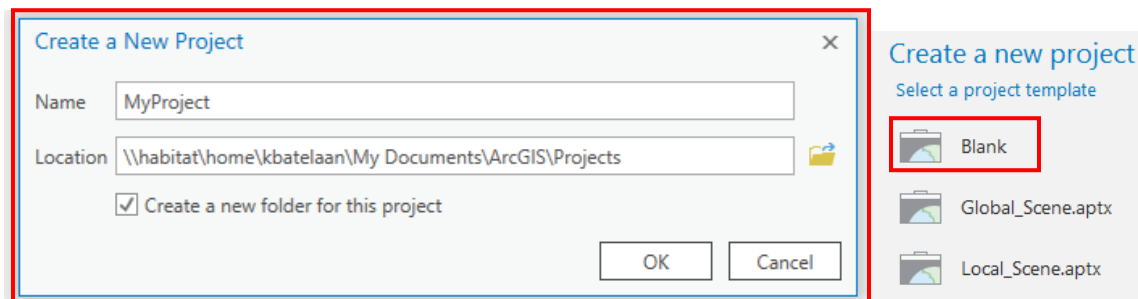


Select **About** from the left navigation menu. Under **Software Update**, chose the link to **Download Now** to install the latest software.



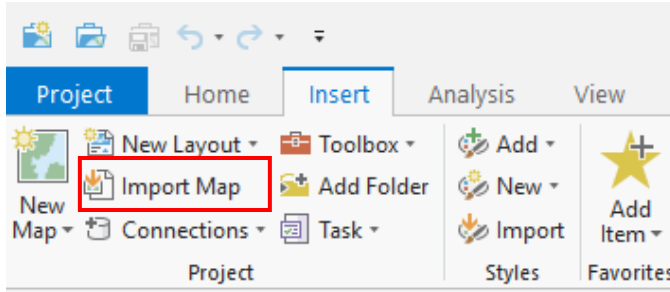
Step 2 Create a Project

a) To create a new project, select a **Blank** template on the right side of the screen. Give the new project a name and select a folder location to store the project in. Click **OK**.

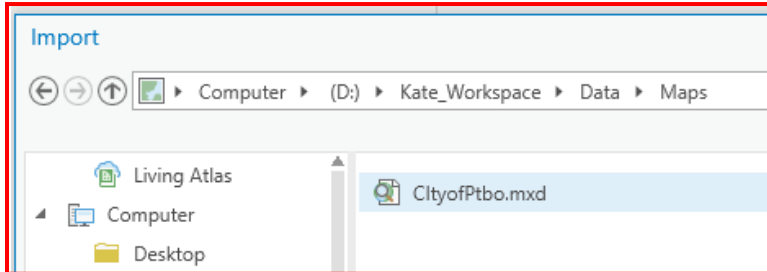


Step 3 Import an ArcMap Document

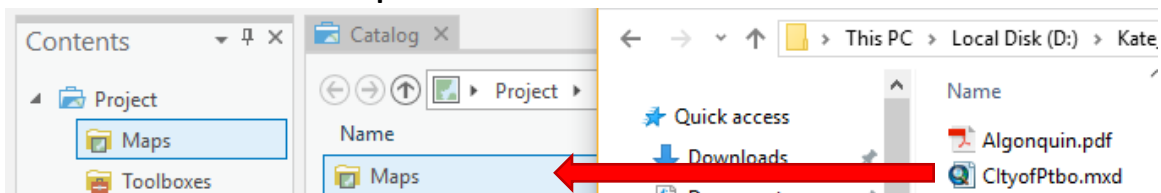
Option a) Select the **Insert** tab from the ribbon at the top the screen. From the **Project** group, select the **Import Map** button .



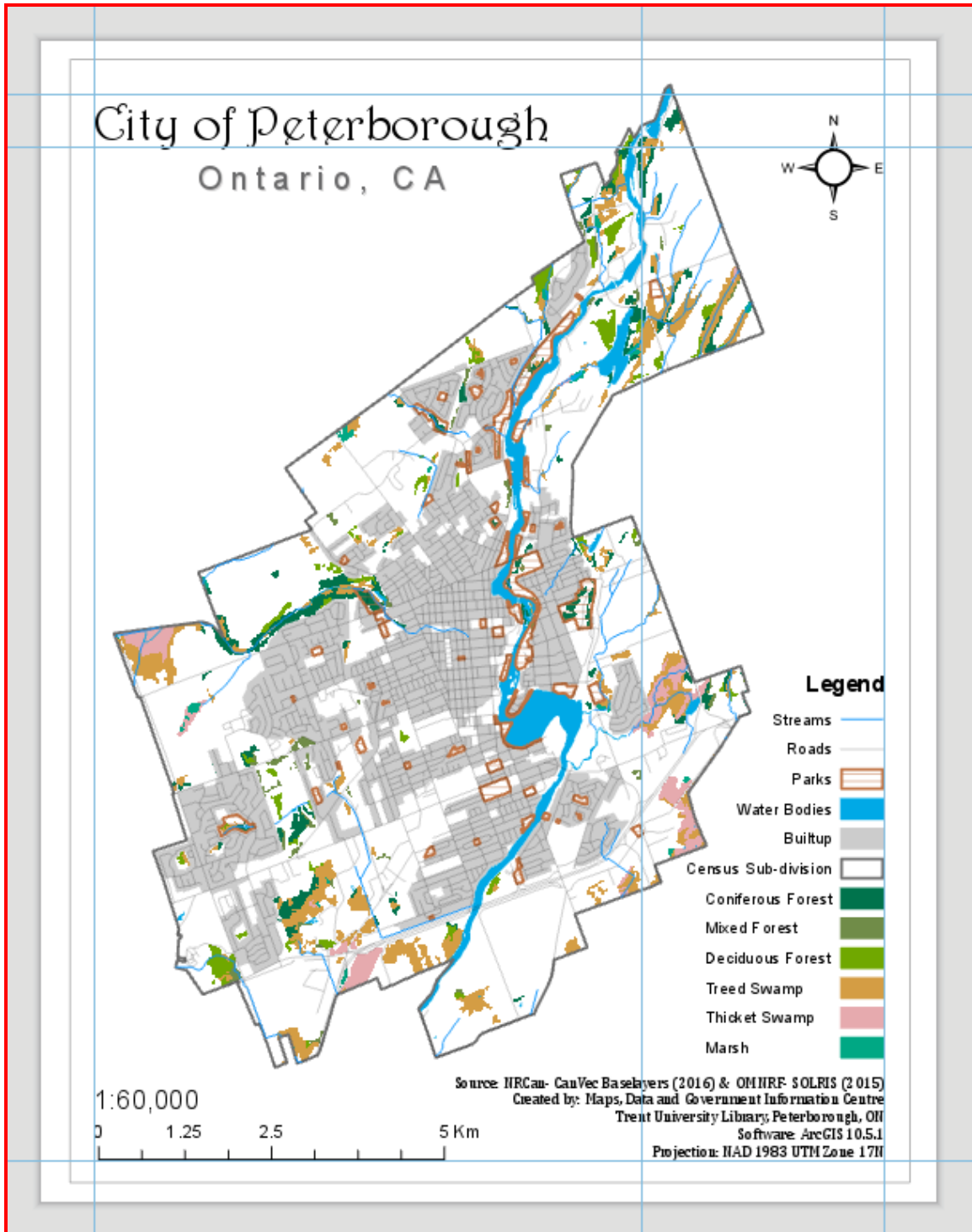
Navigate to the folder location where the ArcMap document (.mxd) is stored that you wish to open. Select the document and click **OK** to import it.



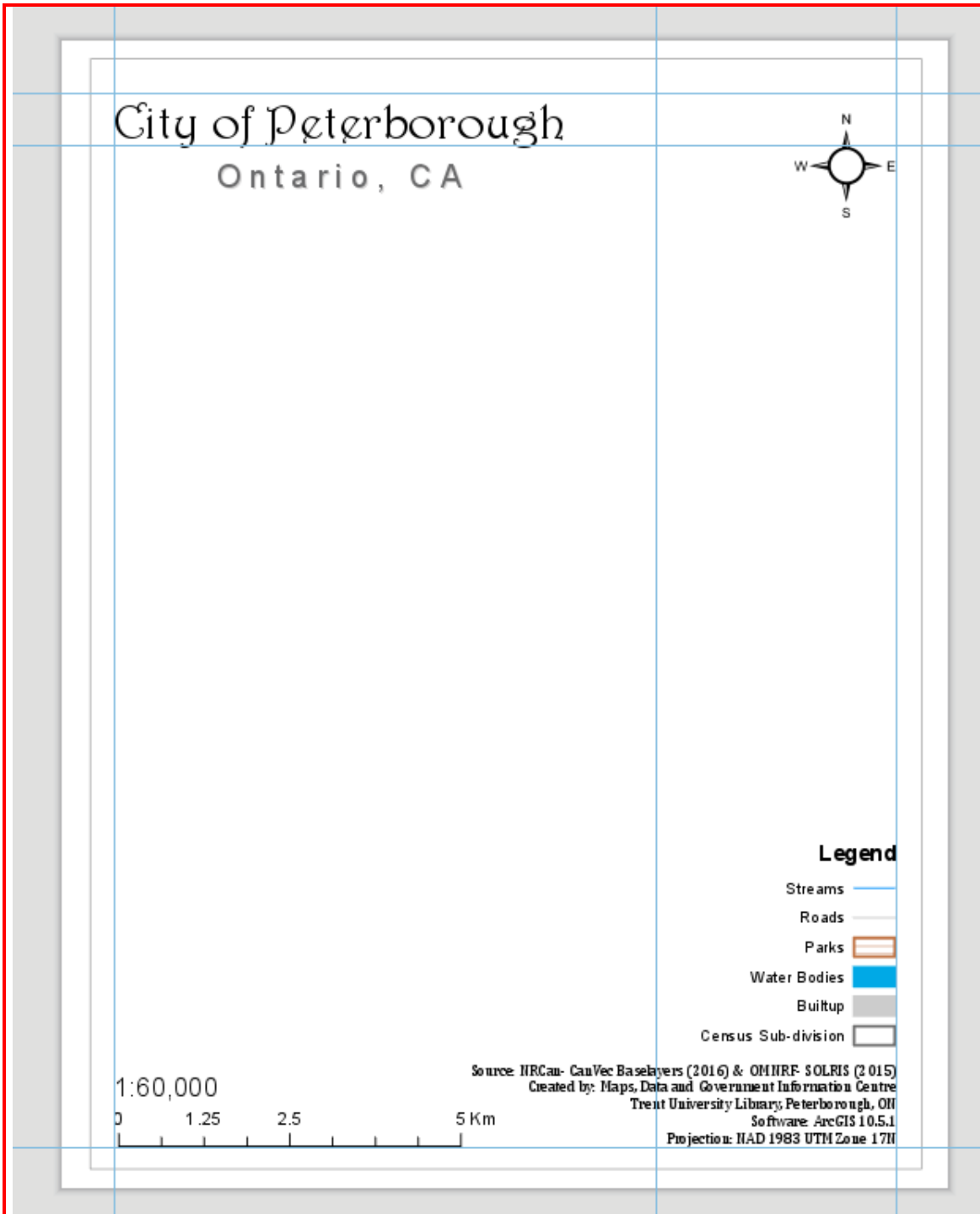
Option b) Drag and drop the ArcMap document (.mxd) into the **Catalog** or **Contents** pane from **Windows Explorer**.





ArcGIS Pro should now display your ArcMap map layout.

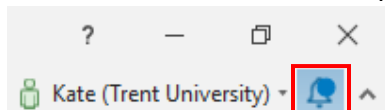


Note: If relative pathnames were not set in ArcMap and the file path was changed since last saving the document, an error will occur causing no data to be displayed.



Step 4 Check for Notifications

- a) In the top right corner of the screen, there is a **Notifications Bell** . When there is a new notification, a blue dot will appear. Click on the **Notification Bell**  to read it.



b) A more detailed description is provided on the import results.

Import results for CityofPtbo.mxd

The following messages were produced when this map or scene was imported: D:\Kate_Workspace\Data\Maps\CityofPtbo.mxd

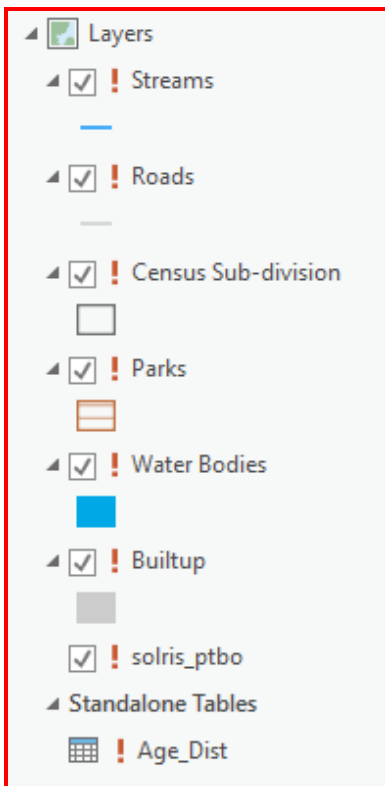
Message Name	Type	Severity	Code	Description	Component Name	Component Type
	Error	High	00003	Layer's data source is inaccessible	Streams	Layer
	Error	High	00003	Layer's data source is inaccessible	Roads	Layer
	Error	High	00003	Layer's data source is inaccessible	Census Sub-division	Layer
	Error	High	00003	Layer's data source is inaccessible	Parks	Layer
	Error	High	00003	Layer's data source is inaccessible	Water Bodies	Layer
	Error	High	00003	Layer's data source is inaccessible	Builtup	Layer
	Error	High	00003	Layer's data source is inaccessible	solris_ptbo	Layer
	Error	High	00032	Standalone table's data source is inaccessible	Age_Dist	esriDTAny
	Warning	Medium	20008	Layer or layout element uses a text symbol which draws with faux bold or italic styles	Builtup	Layer
	Warning	Medium	20046	Scale Text elements are not supported and were dropped from the layout. Please add a new dynamic text element to your layout to show scale.	CityofPtbo	Layout
	Warning	Medium	20038	Legends imported into ArcGIS Pro may appear differently due to improvements in the fitting strategy. Modifications to the default appearance may be required.	CityofPtbo	Layout

Note: If something was not imported, it will provide a reasoning for the error.

E.g. In the above notification details, there are high severity errors associated with all the map layers and tables because the layer's data source is inaccessible. This error occurred because the folder location of the data changed since last saving the ArcMap document and the option for storing relative pathnames to data source was not set in ArcMap. To set relative paths go to **File → Map Document Properties →** and check off **Store relative pathnames to data sources**. Also note the medium severity warning messages about some of the changes to the text elements and the appearance of the legend.

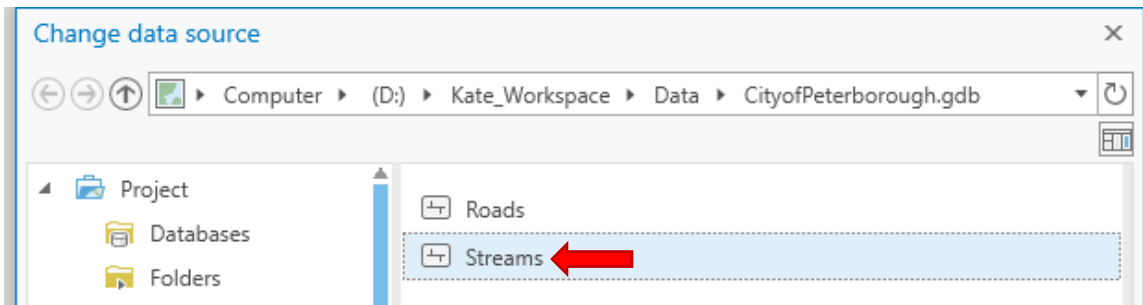
Step 5 Repair the Data Source

a) To repair the layer's data source, expand the **Layers** group in the **Contents** pane on the left side of the screen and select the **red exclamation mark** beside the layer's name.



b) In the **Change Data Source** dialogue, navigate to the folder location of the data and select the file. Click **OK** and **save your work**.

Note: If the file locations are the same (all stored in the same geodatabase) then once you reset one path the rest will automatically be set. If the file locations are different, each data path will need to be reset individually,



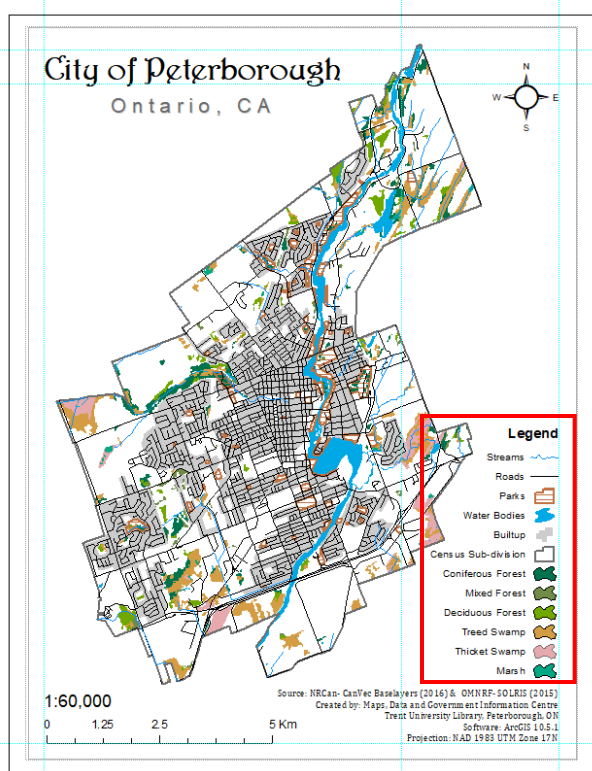
c) The layers will not display on the map in layout view.

Step 6 Compare the Maps in Layout View

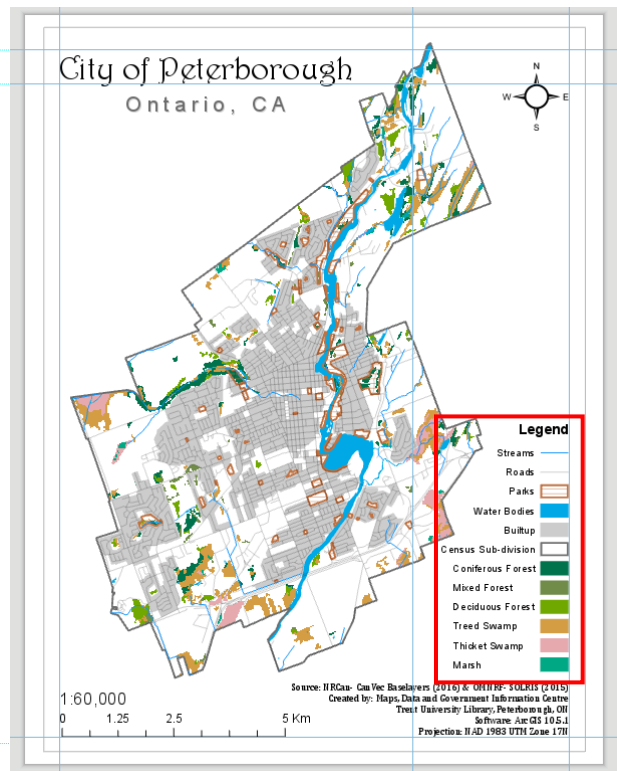
When you import a project into ArcGIS Pro, from ArcMap, it will come in with almost all of the same layers, page layouts and symbology.

Note: The option to override the default patches in the legend is not available in ArcGIS Pro.

ArcMap Layout

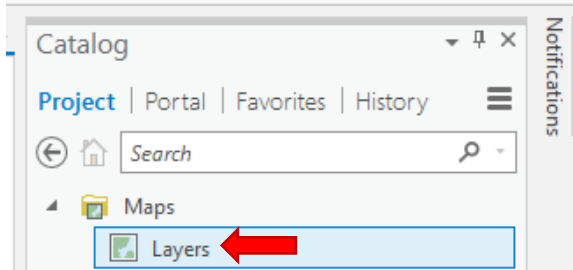


ArcGIS Pro Layout

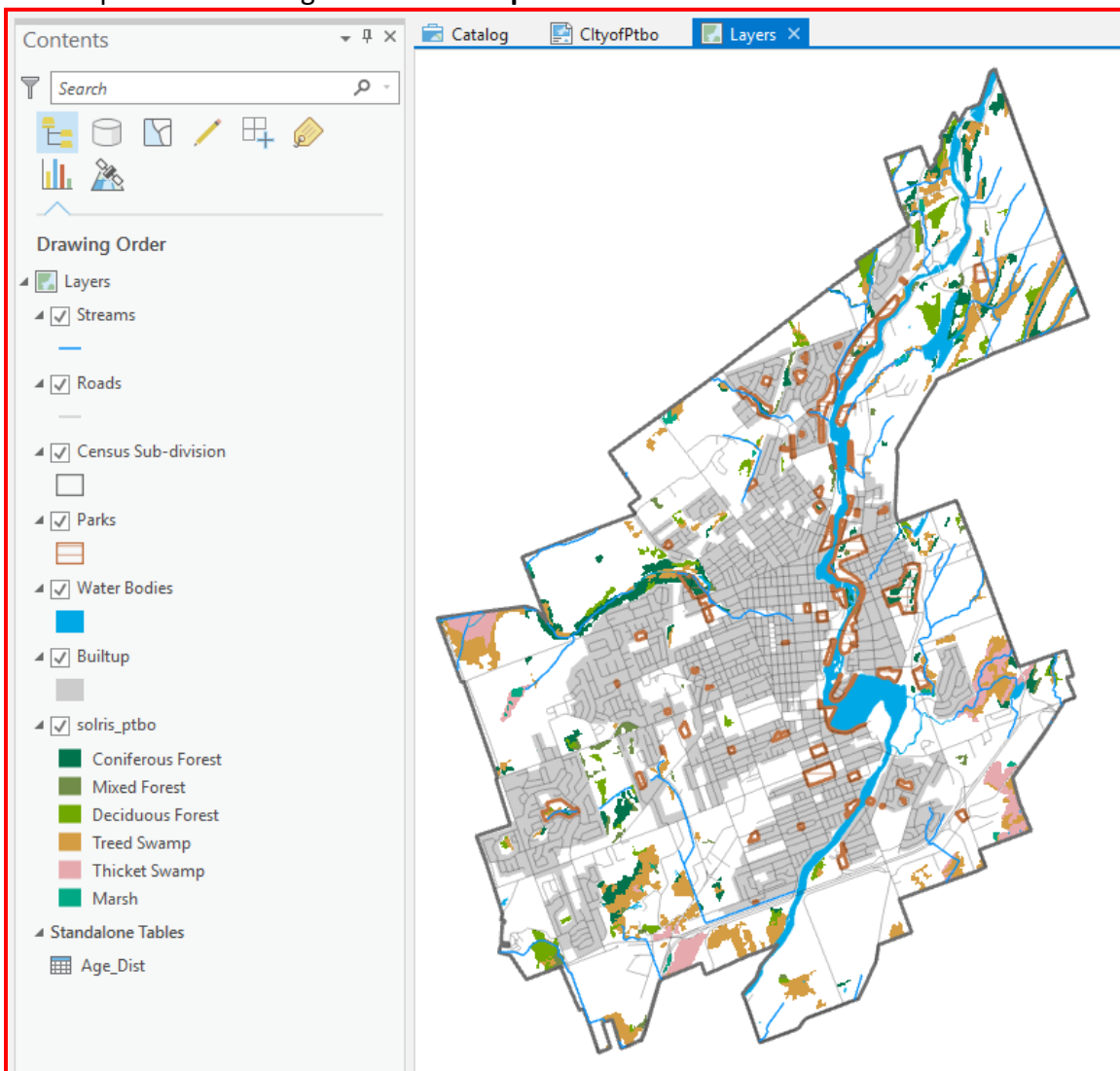


Step 7 Visualize in Map View

To visualize data in **Map View**, which was previously **Data View** in ArcMap, double-click on **Layers** from the **Maps** folder in the **Catalog** pane on the right side of the screen.



The map of Peterborough viewed in **Map View**.



For further assistance with this guide or other topics related to geospatial and/or statistical data and software, please contact us at madgichelp@trentu.ca.