

Healy (top) standing atop 1-2 metre tall remnant walls forming ancient Maya hillslope terraces (Classic Period, A.D. 250-900) at Caracol, Belize. (See Healy et al. 1983, "Caracol, Belize: Evidence of Ancient Maya Agricultural Terraces," *Journal of Field Archaeology* 10:397-410).





Healy with base fragment of Classic Period limestone monument (Stela 4), Plaza A, Pacbitun, Belize (369 cm x 126 cm x 27 cm, reconstructed original size). (see Healy 1990, "An Early Classic Maya Monument at Pacbitun, Belize," *Mexicon* 12: 109-110).



Pacbitun, Belize: View of south side of Structure 1 (16m), on Plaza A, begun during the Terminal Preclassic Period (100 B.C.-A.D. 250) and abandoned in the Terminal Classic Period (A.D. 700-900). (see Healy 1990, "Excavations at Pacbitun, Belize: Preliminary Report on the 1986 and 1987 Investigations," *Journal of Field Archaeology* 7:247-262).



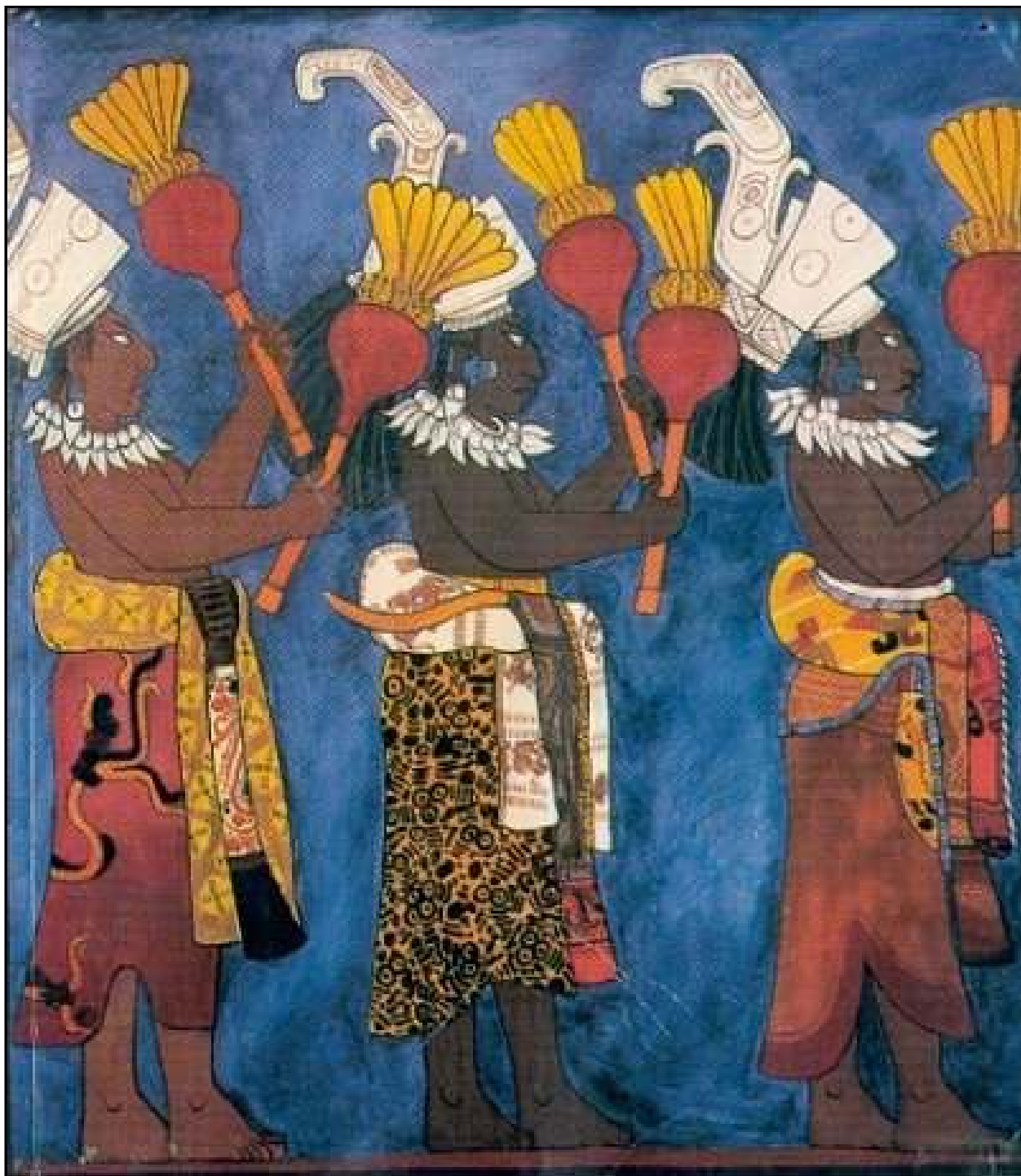
Aerial photograph of Moho Cay, Belize, a Classic Period Maya trade port located near the mouth of the Belize River, outside modern day Belize City (Healy and McKillop 1980, "Moho Cay, Belize: A Preliminary Report on the 1979 Field Season," *Belizean Studies* 8:10-16; and Healy et al. 1984, "Analysis of Obsidian from Moho Cay, Belize: New Evidence on Ancient Maya Trade Routes," *Science* 225: 414-417.



Healy (far left) with 1979 Trent University Archaeological Field School, at Rio Frio Cave, Belize. Also pictured: Drs. Julie Cormack, Jaime Awe, Mark Campbell, Christine White, and Heather McKillop.



Healy (far right) with 1984 Trent University Archaeological Field School, at Augustine-Pine Ridge, Belize. Also pictured: Drs. Lori Wright, Polydora Baker, Kitty Emery, Allan Moore and Jaime Awe.



Parade of Late Classic  
Period Maya musicians, with  
maracas, from a painted  
wall mural at Bonampak,  
Mexico. (see Healy 1988,  
"Music of the Maya,"  
*Archaeology* 41:24-31.

Late Classic polychrome ceramics, such as the spectacular "Buenavista Vase" from Buenavista del Cayo, Belize, were an important part of early Maya inter-site trade and were often included as elite funerary offerings. (29.7 cm x 12.3 cm, diameter, Belize Department of Archaeology, Cat. 27/189-9) (see Healy et al. 1998, "An Ancient Maya Multiple Burial at Caledonia, Cayo District, Belize," *Journal of Field Archaeology* 25:261:274).





A Middle Preclassic Period (ca. 500 B.C.), hand-modeled, clay figurine from the Maya site of Cahal Pech, Belize (see Healy [editor] 1999, *Belize Valley Preclassic Maya Project: Report on the 1996 and 1997 Field Seasons*. Trent University, Department of Anthropology, Occasional Papers No. 13. Peterborough, Ontario).

